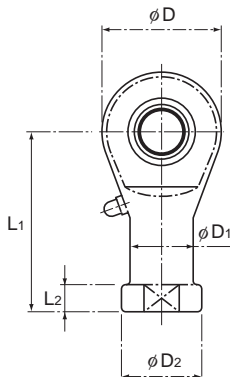


Model RBH (Die Cast, Low Price Type)



Model No.	Outer dimensions			Threaded S ₁ JIS Class 2	Holder Dimensions			
	Length L	Diameter D	Width B ₁ 0 -0.1		W 0 -0.3	D ₁	D ₂	B
RBH 5	35.5	17	8	M5×0.8	9	9	11	6
RBH 6	39.7	19.5	9	M6×1	11	10	13	6.75
RBH 8	48	24	12	M8×1.25	14	12.5	16	9
RBH 10	57	28	14	M10×1.5	17	15	19	10.5
RBH 12	66	32	16	M12×1.75	19	17.5	22	12
RBH 14	75	36	19	M14×2	22	20	25	13.5
RBH 16	84	40	21	M16×2	22	22	27	15
RBH 18	93.5	45	23	M18×1.5	27	25	31	16.5
RBH 20	101.5	49	25	M20×1.5	30	27.5	34	18
RBH 22	111	54	28	M22×1.5	32	30	37	20

[Material]

Holder : High strength zinc alloy (see A-942)
Spherical inner ring : SUJ2, 58 HRC or higher

(Hard chrome plated except for the
inner surface of the inner ring)

[Fitting with the Shaft]

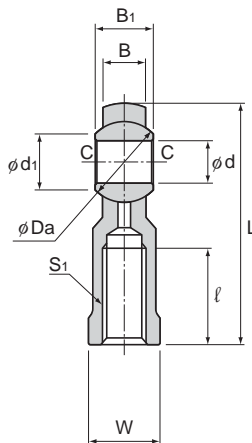
Condition	Dimensional tolerance of the shaft
Normal load	h7
Indeterminate load	p6

Model number coding

RBH10 L

Model number

Left-hand thread



Unit: mm

				Grease nipple	Spherical inner ring dimensions				Permissible tilt angles			Static applied load Radial	Mass
L ₁	L ₂	l	d		Ball diameter Da mm (inch)	d ₁	C	α ₁ °	α ₂ °	α ₃ °	C _s		
			H7								N	g	
	27	4	16	PB107	5	11.112(7/16)	7.7	0.3	8	13	30	5490	16
	30	5	16		6	12.7(1/2)	9	0.3	8	13	30	6760	21
	36	5	19		8	15.875(5/8)	10.4	0.5	8	14	25	9610	43
	43	6.5	23		10	19.05(3/4)	12.9	0.5	8	14	25	13000	68
	50	6.5	27		12	22.225(7/8)	15.4	0.5	8	13	25	16400	100
	57	8	30		14	25.4(1)	16.9	0.7	10	16	24	20200	142
	64	8	36		16	28.575(1 1/8)	19.4	0.7	9	15	24	24600	185
	71	10	40		18	31.75(1 1/4)	21.9	0.7	9	15	24	28800	265
	77	10	43		20	34.925(1 3/8)	24.4	0.7	9	15	24	33600	334
	84	12	47		22	38.1(1 1/2)	25.8	0.7	10	15	23	40400	454

[Clearance]

Unit: mm

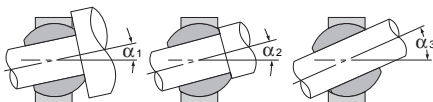
Radial clearance	0.03 or less
Axial clearance	0.1 or less

[Lubrication]

Apply lubricant before using the product. The holder has a greasing hole and an oil groove; they allow grease to be replenished through the grease nipple as necessary.

[Identification of Left-hand Thread]

If the female threading is left-hand, symbol "L" is added. The actual product is marked with symbol "L" on the holder.



Permissible Tilt Angles

Rod End